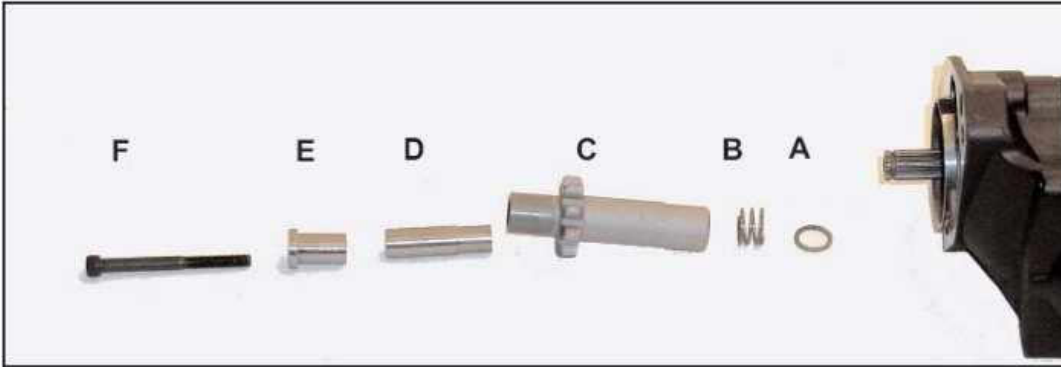




## NEW PG-100 PINION GEAR FROM BDL



- A. Install spring seat on to starter shaft.
- B. Install spring over spring seat.
- C. Install pinion gear over spring.
- D. Install pinion gear tube into pinion gear.
- E. Install bolt collar into end of pinion gear.
- F. Install bolt through complete assembly and tighten lightly. It is advisable to use a thread locker on bolt.

**Note:** We supply 2 bolts with every open belt drive, 1-1/4-20 x 2-1/2" for all starters 1990-1993 and 1- 10-32 x 2-1/2" for all starters 1994 up.

### PINION GEAR INSTALLED:

