



INSTALLATION FOR TOP FUEL 14MM DRIVE Kit numbers TF-1000, TF-2000

Refer to [Warranty](#), [Introduction](#), [belt tracking](#) and [starter gear problems, alignment procedure](#) and [3" Electric Start Installation for FXR and Softail](#) for general instructions.

1. Install oil line fittings on back side of motor plate, cut hose to make 2 pieces, top fitting is for oil return (oil out of filter), bottom fitting is for oil feed (oil into filter).

2. Install motor plate with alternator cover over engine spacer and install the 2 standoffs. Be sure that the motor plate is aligned properly.

Fig. 1



Fig. 2

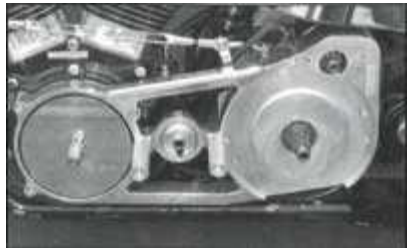
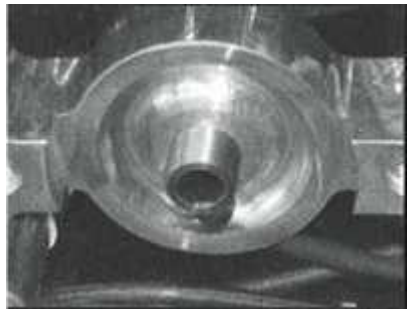


Fig. 3



3. Install threaded oil filter mount on front side of motor plate, grease rubber gasket on oil filter and install hand tight. (Fig. 4 & 5) Install starter pinion gear supplied with kit. (See PG-100 Installation).

Fig. 4





Fig. 5



Fig. 6

4. The pictures below refer to special bushing enclosed which is used only to install front pulley, it is a tool only and must be removed after front pulley is installed. (Fig. 7)



Fig. 7

5. Refer to 3" Electric Start Installation for FXR #5 & #6 for proper procedure for alignment.

6. For final installation remove pressure plate and clutch pack for easier handling and place belt on both pulleys and with special bushing in place, (#4 above) and install belt drive onto engine and trans shaft simultaneously. (Fig. 8)



Fig. 8

7. Make sure writing on belt is facing towards you. (Fig. 9)

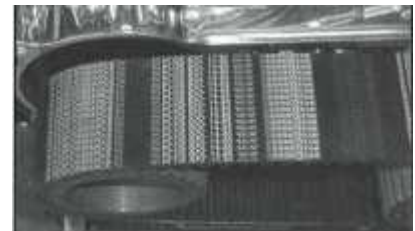


Fig. 9

VERY IMPORTANT! APPLY RED LOCTITE TO SPLINED HUB OF REAR BASKET BEFORE FINAL INSTALLATION. (Fig. 10)

Fig. 10



8. Install engine shaft nut and torque to Harley specifications. An electric impact may be used.
(Fig. 11 & 12)

Fig. 11



Fig. 12



9. Install clutch pack, there are 11 steels and 9 fibers, 2 steels go in first then alternate fibers and steels all the way out. (Fig. 13)

Fig. 13



10. Install clutch hub nut with seal and torque nut to Harley specifications. An electric impact may be used. (Fig. 14 & 15)

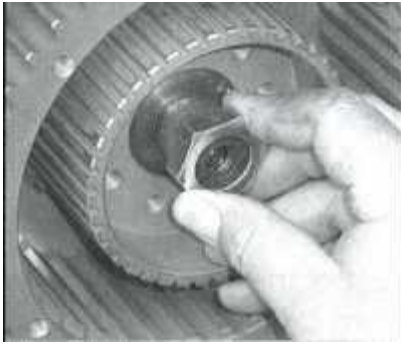


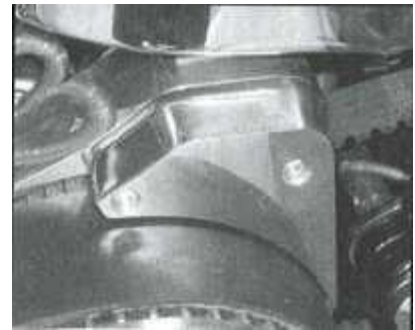
Fig. 14



Fig. 15

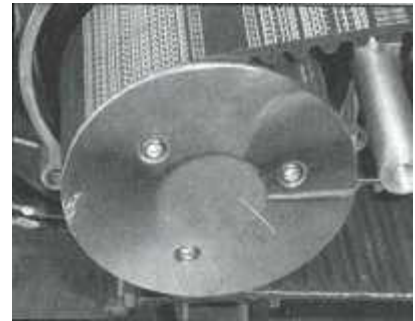
11. Install starter housing. Be sure starter is aligned properly then bolt down securely. (Fig. 16)

Fig. 16



12. Install front pulley cover. (Fig. 17)

Fig. 17



13. Install pressure plate (TFSS-PP) along with the springs (ECS-100) and shoulder bolts (CDSB-100). Any number of springs and shoulder bolts can be used from (3), (6) or (9) depending on how big the engine is and how much pressure plate spring tension is needed for proper clutch friction “grab” which will vary from bike to bike and rider to rider. (Fig. 18)

Fig. 18



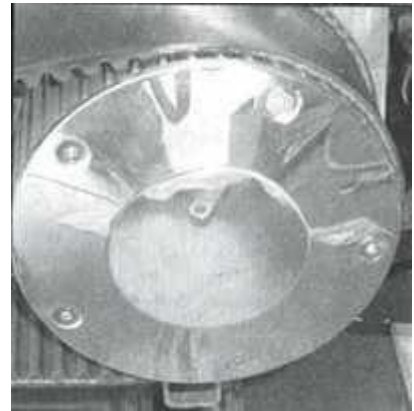
14. Install clutch adjustment screw and adjust clutch as necessary. Refer to 3" Electric Start Installation for FXR. Install nut and tighten after clutch is adjusted. (Fig. 19)

Fig. 19



15. Install rear pulley cover. (Fig. 20)

Fig. 20



NOTE: THIS UNIT WAS DESIGNED USING A STOCK HARLEY-DAVIDSON MOTORCYCLE AND MAY NEED EXTRA CARE FOR PROPER FITMENT. REFER TO WARRANTY PAGE OF INSTALLATION GUIDE.

For installation of the TF-2000 follow instructions above except for # 13 & 14. Refer to the alignment procedure page for final installation of the outside bearing support.