

NOTE TO INSTALLER

FOR ALL SPLINED MAINSHAFT INSTALLATIONS
CHAIN DRIVE, BELT DRIVE OR COMPETITOR CLUTCH
YOU **MUST** APPLY A 272 **RED THREAD LOCKER**
TO THE SPLINES OF TRANSMISSION MAINSHAFT AND CLUTCH HUB,
DURING FINAL INSTALL ASSEMBLY, ALLOW 24 HOURS FOR THREAD LOCKER TO
FULLY CURE
BEFORE YOU EVEN START THE MOTORCYCLE.

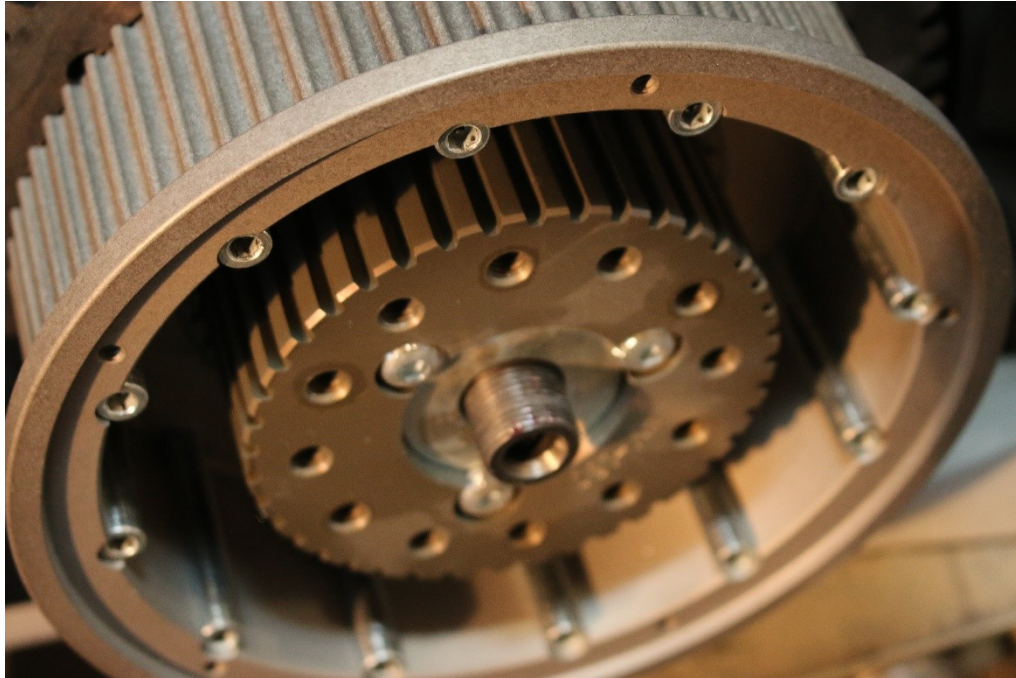
FAILURE TO PERFORM THIS CRITICAL STEP WILL CAUSE PRODUCT TO
MALFUNCTION, OR COMPLETE FAILURE, INSTALLER ERROR IS NOT COVERED
UNDER ANY WARRANTY.

"SEE PHOTOS"

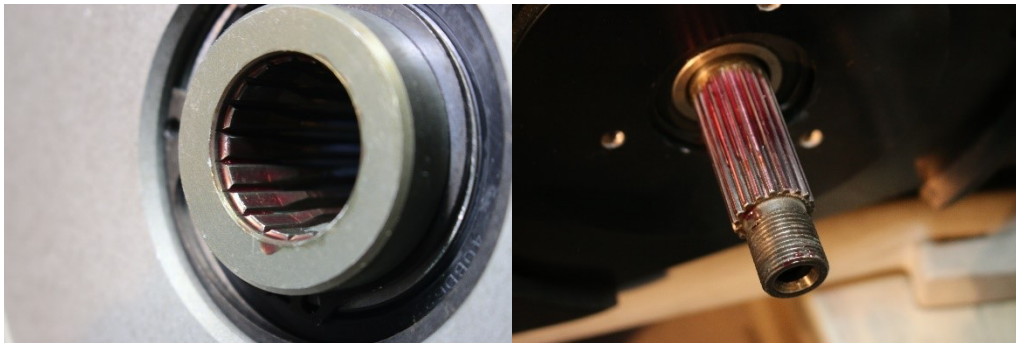
APPLY SOME SORT OF RED THREAD LOCKER DIRECTLY TO THE SPLINES OF THE TRANSMISSION
MAINSHAFT



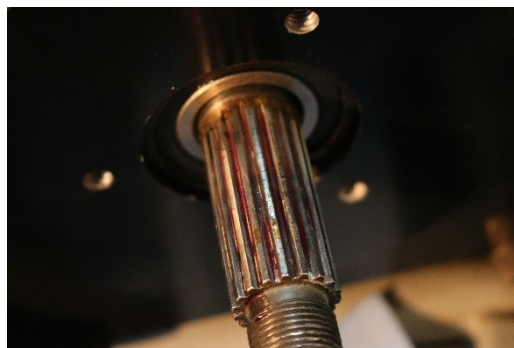
NOW SLIDE THE CLUTCH HUB AND BASKET ASSEMBLY ONTO MAINSHAFT
THIS WILL APPLY THE RED THREAD LOCKER TO THE SPLINES OF THE CLUTCH HUB



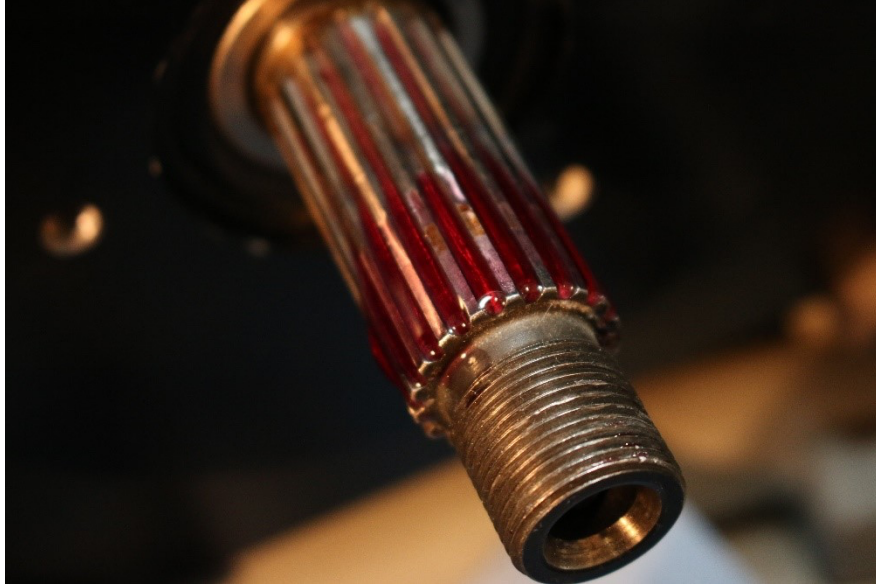
NEXT, REMOVE THE CLUTCH HUB AND BASKET ASSEMBLY
WIPE OFF THE EXCESS RED THREAD LOCKER THAT WAS FORCED TOWARDS THE INNER PRIMARY
BEARING OR OUR MOTORPLARE BEARING



ONCE YOU HAVE CLEANED OFF THE EXCESS RED THREAD LOCKER



YOU WILL NEED TO REAPPLY RED THREAD LOCKER TO THE FIRST $\frac{3}{4}$ " OF THE MAINSHAFT
SPLINES.



INSERT THE CLUTCH HUB AND BASKET ASSEMBLY WITH BELT AND FRONT PULLEY FOR FINAL ASSEMBLY

IF YOU NEED TO REMOVE CLUTCH ASSEMBLY TO PERFORM ANY MAINTENANCE OR REPAIRS, YOU CAN REMOVE CLUTCH HUB WITH A COMMON HARMONIC BALANCER PULLER,



TO REINSTALL HUB AND BASKET ASSEMBLY, REMOVE ALL OLD RED THREAD LOCKER FROM SPLINES OF MAINSHAFT AND CLUTCH HUB, REAPPLY **RED THREAD LOCKER**

DURING FINAL ASSEMBLY, TORQUE MAINSHAFT NUT, "ALSO HELD ON WITH **RED THREAD LOCKER**" TO 70-80 FT.LBS. THEN LET THREAD LOCKER CURE FOR A FULL 24 HOURS BEFORE YOU EVEN START THE MOTORCYCLE.

YOU MAY ALSO SEE VIDEOS OF THESE STEPS AT www.beltdrives.com UNDER TECHNICAL VIDEO

REVISED 05-21-2026